

Works for Jandorf Fan & Light Switches:

- #60304 – Single Speed, 2-Wire
 (3A-250V, 3A-125VT, 6A-125V, 6A-125VL)
- #60305 – 3-Way 3-Wire
 (3A-250V, 6A-125V, 3A-125VL)

What's Inside

1 – Fan & Light Switch with Wire Leads and Pull Chain

What's Needed

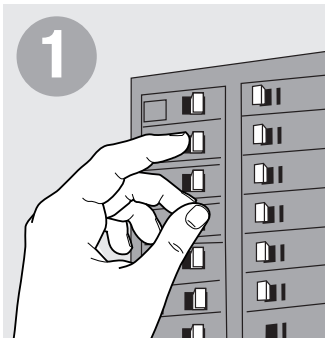
- Screwdriver
- Wire Stripper
- Wire Cutter
- Wire Nuts

What's Its Purpose

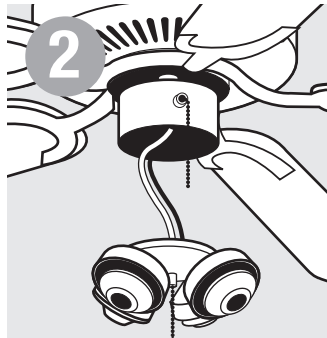
Turns ceiling fan and light on and off and regulates fan speed.

Warning

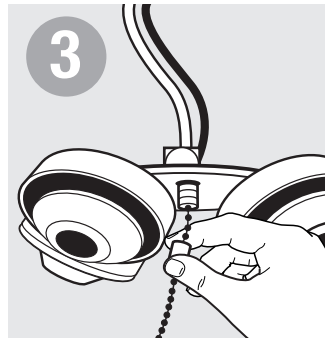
- Before beginning **TURN OFF POWER** to the unit from the fuse or circuit breaker.
- Follow local electrical regulations or codes when installing and using this product.
- Deviation from the assembly instructions may result in a **risk of fire or electric shock**.
- Maximum ambient air temperature of 50°C (122F°) at switch site.



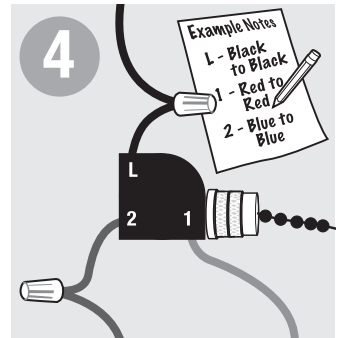
1 Before beginning **TURN OFF POWER** to unit from fuse or circuit breaker.



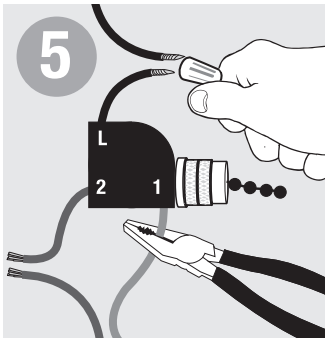
2 Remove switch housing cover and light kit if present.



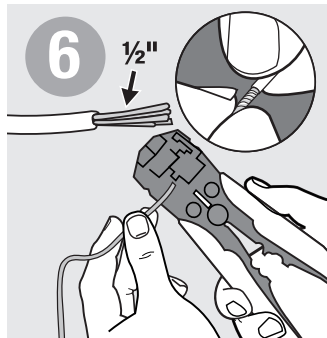
3 Unscrew chain guide to remove switch.



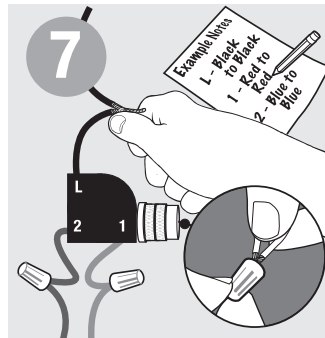
4 Label all wires to position and color before disconnecting.



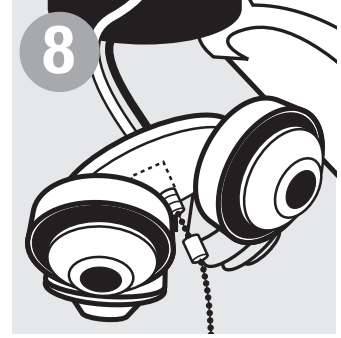
5 Remove old switch from connecting wires by removing wire nuts (if present) or cutting off the wire close to the switch.



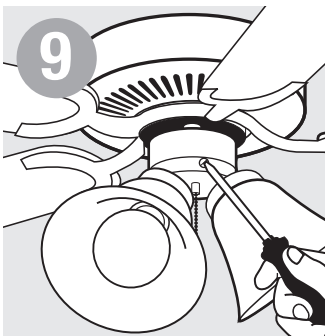
6 Before reconnecting, make sure old wires on fixture have proper insulation and exposed 1/2" wire end with no loose strands. Twist wire strands tightly together.



7 Attach wires to the new switch in same position as old switch. Take 1/2" exposed wire from switch and 1/2" exposed wire from fixture and twist together. Secure with wire nut.



8 Remount switch, screwing on the chain guide to secure.



9 Replace housing cover and light kit.